

APPENDIX A

PHOTO TOUR



KY 321 Southbound Beginning Near KY 40



Walmart Entrance onto KY 321



KY 321 Southbound South of Walmart Entrance



Major Gas Line just West of KY 321



KY 321 Southbound in front of Schools



KY 321 Southbound in front of Post Office



KY 321 Southbound near Pizza Hut



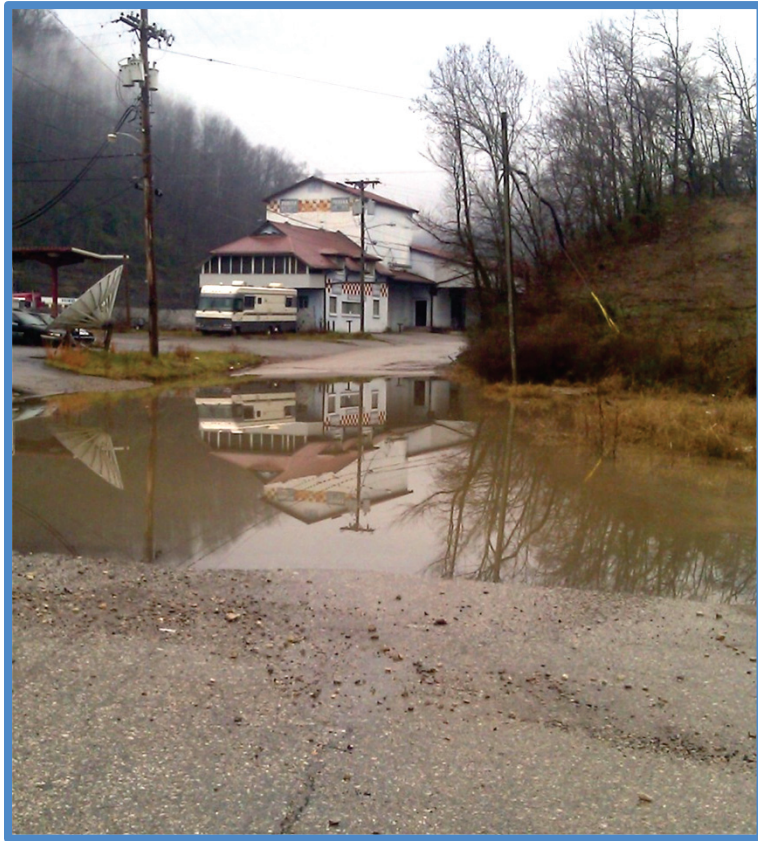
KY 321 Southbound at KY 2378 (James Trimble Boulevard)



KY 321 Southbound South of KY 2378



KY 321 Southbound approaching Mill Branch Road



Mill Branch Road flooded after a rain at KY 321X (Broadway)



KY 321 South End of Project looking North



Teays Branch Road Embankment at KY 40 Intersection



KY 40 Horizontal Curvature South of Teays Branch Road Intersection



KY 40 Horizontal Curvature North of WH Dixon Road Intersection



Extreme Horizontal Curvature on KY 40 near Paul Hall Hospital



Blind curve at the South end of KY 40



Sidewalk on KY 2378 at KY 321 Intersection



KY 321 headed north with pedestrian on shoulder of road



NRHP Property on West Street just off KY 40



Sidewalk on KY 2378 vanishes on KY 321



Beside the Post Office on the same side of KY 321 potentially eligible for the NRHP



Cemetery very close to sharp “hospital curve” on KY 40 potentially historic



Johnson Central High School and Johnson County Middle School complex



Paul Hall Hospital on the right – KY 2378 heading west



New Pharmacy School Site on Teays Branch Road



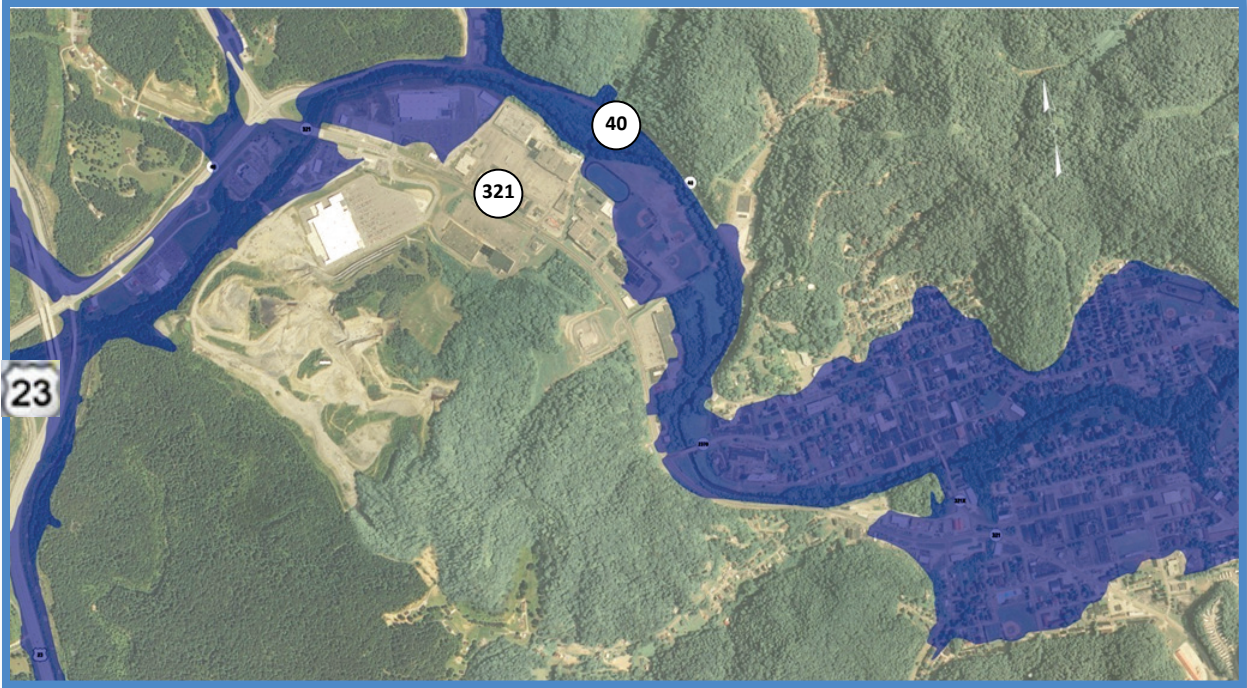
Dense development along KY 321 (headed southbound)



Steep cuts along the West side of KY 321 (southbound beyond KY 2378)



Paint Creek traverses the area



100 Year Floodplain for Paintsville



Southbound on KY 321 – Driver decisions include: right turn lane to go to Marathon station or continue on in the turn lane to Walmart, left turn lane and merge into one lane from two all at one point.

CRASHES

KY 321
JOHNSON COUNTY
CRASH ANALYSIS
2008-2010

Prefix	Route	Suffix	Beg MP	End MP	SEG/ SPOT	Number of Crashes	# of Darkness Crashes	# of Darkness Crashes % of total	# of Run-Off-Road Crashes	Run-Off-Road Crashes % of Total	#of Fatal Crashes	# of Fatal Crashes % of Total	# of Injury Crashes	# of Injury Crashes % of total	# Killed	# Injured	ADT	Actual Crash Rate	Average Crash Rate	Critical Crash Rate	Road Type	CRF	Wet Roadway Crashes	Wet Roadway Crashes % of Total	Single Vehicle Crashes	Single Vehicle Crashes % of Total	Rear-End Crashes	Rear-End Crashes % of Total	Angle Crashes	Angle Crashes% of Total	SSSD	SSSD % of Total	OLT	OLT % of Total	SSOD	SSOD % of Total
KY	321		7.061	8.791	SEGMENT	207	41	20%	2	1%	0	0%	36	17%	0	52	16000	682.952	209.231	278.562	Rural 2-lane	2.452	25	12%	8	4%	108	52%	44	21%	18	9%	6	3%	2	1%
KY	321		7.637	8.637	1 MILE	167	34	20%	2	1%	0	0%	31	19%	0	44	17500	871.494	209.231	296.961	Rural 2-lane	2.935	18	11%	9	5%	87	52%	41	25%	11	7%	5	3%	1	1%
KY	321		8.638	9.638	1 MILE	35	9	26%	0	0%	0	0%	5	14%	0	9	7500	426.180	209.231	345.343	Rural 2-lane	1.234	3	9%	0	0%	2	6%	3	9%	2	6%	0	0%	0	0%
KY	321		5.616	10.616	SEGMENT	235	50	21%	2	1%	1	0%	45	19%	1	63	8550	502.016	209.231	264.760	Rural 2-lane	1.896	31	13%	11	5%	18	8%	53	23%	23	10%	9	4%	2	1%
KY	321		6.934	7.034	0.1 MILE	7	1	14%	0	0%	0	0%	2	29%	0	4	6710	0.953	0.214	0.722	Rural 4-lane Undiv.	1.319	3	43%	0	0%	2	29%	3	43%	2	29%	0	0%	0	0%
KY	321		7.637	7.737	0.1 MILE	11	2	18%	2	18%	0	0%	2	18%	0	3	14510	0.692	0.210	0.538	Rural 2-lane	1.288	2	18%	3	27%	7	64%	1	9%	0	0%	0	0%	0	0%
KY	321		7.855	7.955	0.1 MILE	11	3	27%	0	0%	0	0%	3	27%	0	3	17500	0.574	0.210	0.506	Rural 2-lane	1.135	1	9%	1	9%	5	45%	0	0%	1	9%	0	0%	0	0%
KY	321		7.967	8.067	0.1 MILE	17	0	0%	0	0%	0	0%	5	29%	0	7	17500	0.887	0.210	0.506	Rural 2-lane	1.754	1	6%	0	0%	10	59%	5	29%	1	6%	0	0%	0	0%
KY	321		8.076	8.176	0.1 MILE	16	2	13%	0	0%	0	0%	2	13%	0	2	17500	0.835	0.210	0.506	Rural 2-lane	1.651	2	13%	1	6%	10	63%	2	13%	1	6%	0	0%	1	6%
KY	321		8.194	8.294	0.1 MILE	23	4	17%	0	0%	0	0%	5	22%	0	7	17500	1.200	0.210	0.506	Rural 2-lane	2.373	3	13%	1	4%	15	65%	4	17%	1	4%	0	0%	0	0%
KY	321		8.300	8.400	0.1 MILE	14	2	14%	1	7%	0	0%	1	7%	0	1	17500	0.731	0.210	0.506	Rural 2-lane	1.444	3	21%	1	7%	6	43%	4	29%	2	14%	0	0%	0	0%
KY	321		8.409	8.509	0.1 MILE	19	8	42%	0	0%	0	0%	5	26%	0	9	17500	0.992	0.210	0.506	Rural 2-lane	1.960	5	26%	0	0%	14	74%	9	47%	1	5%	1	5%	0	0%
KY	321		8.511	8.611	0.1 MILE	32	8	25%	0	0%	0	0%	6	19%	0	9	17500	1.670	0.210	0.506	Rural 2-lane	3.302	0	0%	1	3%	9	28%	12	38%	3	9%	0	0%	3	9%
KY	321		8.613	8.713	0.1 MILE	23	4	17%	0	0%	0	0%	4	17%	0	8	17500	1.200	0.210	0.506	Rural 2-lane	2.373	5	22%	1	4%	12	52%	4	17%	3	13%	2	9%	0	0%
KY	321		8.726	8.826	0.1 MILE	12	2	17%	0	0%	0	0%	2	17%	0	2	13400	0.818	0.210	0.552	Rural 2-lane	1.481	1	8%	0	0%	5	42%	3	25%	3	25%	0	0%	0	0%
KY	321		6.927	7.127	0.2 MILE	14	4	29%	0	0%	0	0%	4	29%	0	6	9200	1.390	0.428	1.009	Rural 4-lane Undiv.	1.378	4	29%	0	0%	5	36%	6	43%	2	14%	0	0%	1	7%
KY	321		7.779	7.979	0.2 MILE	19	6	32%	0	0%	0	0%	5	26%	0	5	17500	0.992	0.420	0.828	Rural 2-lane	1.198	2	11%	2	11%	14	74%	1	5%	1	5%	0	0%	0	0%
KY	321		7.980	8.180	0.2 MILE	33	2	6%	0	0%	0	0%	7	21%	0	9	17500	1.722	0.420	0.828	Rural 2-lane	2.081	3	9%	1	3%	19	58%	7	21%	2	6%	0	0%	1	3%
KY	321		8.194	8.394	0.2 MILE	36	6	17%	1	3%	0	0%	6	17%	0	8	17500	1.879	0.420	0.828	Rural 2-lane	2.270	5	14%	2	6%	21	58%	9	25%	2	6%	0	0%	8	22%
KY	321		8.409	8.609	0.2 MILE	62	17	27%	0	0%	0	0%	11	18%	0	18	17500	3.235	0.420	0.828	Rural 2-lane	3.910	6	10%	1	2%	23	37%	21	34%	3	5%	4	6%	0	0%
KY	321		8.613	8.813	0.2 MILE	36	6	17%	0	0%	0	0%	6	17%	6	11	16200	2.029	0.420	0.845	Rural 2-lane	2.403	6	17%	1	3%	17	47%	7	19%	6	17%	3	8%	0	0%
KY	321		6.731	7.031	0.3 MILE	13	2	15%	0	0%	1	8%	3	23%	1	5	6710	589.773	214.176	490.783	Rural 4-lane Undiv.	1.202	3	23%	1	8%	2	15%	6	46%	2	15%	2	15%	0	0%
KY	321		7.667	7.967	0.3 MILE	30	6	20%	0	0%	0	0%	6	20%	0	7	16840	542.305	209.231	376.693	Rural 2-lane	1.440	3	10%	3	10%	22	73%	2	7%	1	3%	0	0%	0	0%
KY	321		7.967	8.267	0.3 MILE	47	5	11%	0	0%	0	0%	9	19%	0	10	17500	817.568	209.231	373.336	Rural 2-lane	2.190	4	9%	2	4%	29	62%	10	21%	2	4%	0	0%	1	2%
KY	321		8.268	8.568	0.3 MILE	68	17	25%	1	1%	0	0%	11	16%	0	12	17500	1182.865	209.231	373.336	Rural 2-lane	3.168	10	15%	2	3%	31	46%	17	25%	7	10%	2	3%	0	0%
KY	321		8.576	8.876	0.3 MILE	57	11	19%	0	0%	0	0%	11	19%	0	18	14100	1230.609	209.231	393.160	Rural 2-lane	3.130	7	12%	1	2%	24	42%	17	30%	7	12%	4	7%	0	0%
KY	40		8.468	8.568	0.1 MILE	12	2	17%	0	0%	0	0%	4	33%	0	8	12200	0.898	0.210	0.570	Rural 2-lane	1.575	2	17%	1	8%	5	42%	3	25%	2	17%	1	8%	0	0%
KY	40		8.572	8.672	0.1 MILE	9	1	11%	0	0%	0	0%	4	44%	0	12	14700	0.559	0.096	0.326	Rural 4-lane Div.	1.715	1	11%	0	0%	1	11%	3	33%	1	11%	2	22%	0	0%
KY	40		8.995	9.095	0.1 MILE	7	4	57%	0	0%	0	0%	3	43%	0	6	13000	0.492	0.096	0.343	Rural 4-lane Div.	1.435	0	0%	0	0%	2	29%	3	43%	1	14%	1	14%	0	0%
KY	40		8.911	9.111	0.2 MILE	9	4	44%	0	0%	0	0%	4	44%	0	7	13200	0.623	0.192	0.523	Rural 4-lane Div.	1.189	0	0%	0	0%	4	44%	3	33%	1	11%	1	11%	0	0%
KY	40		8.468	8.768	0.3 MILE	23	4	17%	0	0%	0	0%	8	35%	0	20	13900	1.511	0.288	0.675	Rural 4-lane Div.	2.238	3	13%	2	9%	6	26%	5	22%	4	17%	3	13%	0	0%
KY	40		8.854	9.154	0.3 MILE	11	4	36%	0	0%	0	0%	5	45%	0	9	12600	265.758	96.105	232.311	Rural 4-lane Div.	1.144	1	9%	0	0%	5	45%	4	36%	1	9%	1	9%	0	0%
KY	321	X	0.191	0.291	0.1 MILE	6	0	0%	0	0%	0	0%	2	33%	0	2	4200	1.305	0.210	0.869	Rural 2-lane	1.501	1	17%	0	0%	3	50%	2	33%	0	0%	0	0%	0	0%
KY	321	X	0.014	0.214	0.2 MILE	9	2	22%	0	0%	0	0%	4	44%	0	5	5300	1.551	0.420	1.199	Rural 2-lane	1.293	3	33%	0	0%	3	33%	4	44%	0	0%	0	0%	0	0%
KY	321	X	0.014	0.314	0.3 MILE	13	2	15%	0	0%	0	0%	4	31%	0	5	4800	2.473	0.630	1.617	Rural 2-lane	1.530	3	23%	0	0%	5	38%	5	38%	0	0%	0	0%	0	0%

**HIGHWAY
INFORMATION
SUMMARY**

Route	Beginning MP	Beginning Feature	Ending MP	Ending Feature	Length	Functional Class	State System	NHS	NTN	Truck Weight Class	# of Lanes	Lane Width	Shoulder Type
KY 321	7.061	KY 321X	7.113	6TH ST	0.052	Rural Minor Arterial	State Secondary	No	No	AAA	2	12	Paved with Bituminous Material
	7.113	6TH ST	7.350	MILL BRANCH RD	0.237	Rural Minor Arterial							
	7.350	MILL BRANCH RD	7.715	KY 2378	0.365	Rural Minor Arterial							
	7.715	KY 2378	8.100	JOHNSON CENTRAL HIGH SCHOOL DR	0.385	Rural Minor Arterial							
	8.100	JOHNSON CENTRAL HIGH SCHOOL DR	8.602	MCCLOUD ST	0.502	Rural Minor Arterial							
	8.602	MCCLOUD ST	8.670	PAINT CREEK BRIDGE	0.068	Rural Minor Arterial							
	8.670	PAINT CREEK BRIDGE	8.791	KY 40	0.121	Rural Minor Arterial							
KY 40	8.317	US 23 SOUTHBOUND OFF RAMP	8.388	US 23 OVER KY 40 IN PAINTSVILLE	0.071	Rural Major Collector	State Secondary	No	No	AAA	2	12	Paved with Bituminous Material
	8.388	US 23 OVER KY 40 IN PAINTSVILLE	8.395	US 23 UNDERPASS	0.007	Rural Major Collector							
	8.395	US 23 UNDERPASS	8.494	OVERPASS KY 40 @ MUDLICK	0.099	Rural Major Collector							
	8.494	OVERPASS KY 40 @ MUDLICK	8.529	US 460	0.035	Rural Major Collector							
	8.529	US 460	8.632	HIDDEN VALLEY RD	0.103	Rural Major Collector							
	8.632	HIDDEN VALLEY RD	8.850	DETENTION CENTER RD	0.218	Rural Major Collector							
	8.850	DETENTION CENTER RD	9.073	KY 321	0.223	Rural Major Collector							
	9.073	KY 321	9.487	TEAYS BRANCH RD	0.414	Rural Major Collector							
	9.487	TEAYS BRANCH RD	10.111	WH DIXON BLVD	0.624	Rural Major Collector							
	10.111	WH DIXON BLVD	10.549	CEMETERY RD	0.438	Rural Major Collector							
	10.549	CEMETERY RD	10.613	WEST ST	0.064	Rural Major Collector							
	10.613	WEST ST	10.668	KY 2560	0.055	Rural Major Collector							
	10.668	KY 2560	10.743	CHURCH ST/KY 2560	0.075	Rural Major Collector							
	10.743	CHURCH ST/KY 2560	10.799	DAVIS ST	0.056	Rural Major Collector							
10.799	DAVIS ST	10.821	COURT ST	0.022	Rural Major Collector								
10.821	COURT ST	10.890	KY321X/COLLEGE ST	0.069	Rural Major Collector								
KY 321 X	0.027	KY 2333	0.151	PAINT CREEK BRIDGE	0.124	Rural Local	Supplemental	No	No	AAA	2	15	Earth/Curbed
	0.151	PAINT CREEK BRIDGE	0.206	KY 2561/MAIN ST	0.055	Rural Local							
	0.206	KY 2561/MAIN ST	0.263	2ND ST	0.057	Rural Local							
	0.263	2ND ST	0.333	KY 40	0.070	Rural Local							
KY 2378	0.000	KY 321	0.053	PAINT CREEK BRIDGE	0.053	Rural Local	Supplemental	No	No	A	2	12	Paved with Portland Cement
	0.053	PAINT CREEK BRIDGE	0.125	JAMES S TRIMBLE BLVD	0.072	Rural Local							

Route	Beginning MP	Beginning Feature	Ending MP	Ending Feature	Shoulder Width	Speed Limit	Pavement Type	Condition Index	Safety Index	Service Index	Percentile	VSF	CRF	Speed Limit	Critical Rate Factor	Design Speed	Actual Rate	Average Rate	Critical Rate
KY 321	7.061	KY 321X	7.113	6TH ST	11	35	High Flexible	30	41	5	47.05	0.47	0.3763321	35	0.54	60	50.7176205	64.04118161	134.7682693
	7.113	6TH ST	7.350	MILL BRANCH RD															
	7.350	MILL BRANCH RD	7.715	KY 2378	5	35/45													
	7.715	KY 2378	8.100	JOHNSON CENTRAL HIGH SCHOOL DR	5/10	45													
	8.100	JOHNSON CENTRAL HIGH SCHOOL DR	8.602	MCCLLOUD ST															
	8.602	MCCLLOUD ST	8.670	PAINT CREEK BRIDGE	10	18.5													
8.670	PAINT CREEK BRIDGE	8.791	KY 40																
KY 40	8.317	US 23 SOUTHBOUND OFF RAMP	8.388	US 23 OVER KY 40 IN PAINTSVILLE	12	55	High Flexible	24	46.5	0	46.97	0.33	0.525853	55	0.25	55	75.41217966	64.04118161	143.4092505
	8.388	US 23 OVER KY 40 IN PAINTSVILLE	8.395	US 23 UNDERPASS															
	8.395	US 23 UNDERPASS	8.494	OVERPASS KY 40 @ MUDLICK															
	8.494	OVERPASS KY 40 @ MUDLICK	8.529	US 460															
	8.529	US 460	8.632	HIDDEN VALLEY RD	10	45		30	26	8.9	22.87	0.14	0.4982673	35	1.3	60	65.72221596	64.04118161	131.9015136
	8.632	HIDDEN VALLEY RD	8.850	DETENTION CENTER RD															
	8.850	DETENTION CENTER RD	9.073	KY 321	10/3	45/35		9	49	15	51.94	0.39	0.2782577	25	0.58	60	49.9674859	64.04118161	179.5726802
	9.073	KY 321	9.487	TEAYS BRANCH RD															
	9.487	TEAYS BRANCH RD	10.111	WH DIXON BLVD	3														
	10.111	WH DIXON BLVD	10.549	CEMETERY RD	3/0														
	10.549	CEMETERY RD	10.613	WEST ST	0	25													
	10.613	WEST ST	10.668	KY 2560															
	10.668	KY 2560	10.743	CHURCH ST/KY 2560															
	10.743	CHURCH ST/KY 2560	10.799	DAVIS ST															
10.799	DAVIS ST	10.821	COURT ST																
10.821	COURT ST	10.890	KY321X/COLLEGE ST																
KY 321 X	0.027	KY 2333	0.151	PAINT CREEK BRIDGE	2/0	25	High Flexible	N/A	N/A	N/A	N/A	N/A	N/A	N/A	N/A	N/A	N/A	N/A	N/A
	0.151	PAINT CREEK BRIDGE	0.206	KY 2561/MAIN ST	0		High Flexible/Rigid												
	0.206	KY 2561/MAIN ST	0.263	2ND ST	0		High Rigid												
	0.263	2ND ST	0.333	KY 40	0														
KY 2378	0.000	KY 321	0.053	PAINT CREEK BRIDGE	5	35	High Flexible	N/A	N/A	N/A	N/A	N/A	N/A	N/A	N/A	N/A	N/A	N/A	N/A
	0.053	PAINT CREEK BRIDGE	0.125	JAMES S TRIMBLE BLVD															